

## TW

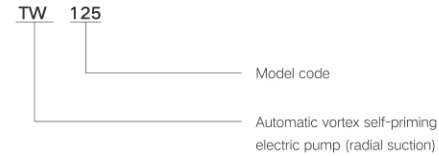
Auto Peripheral Pump



Stainless Steel Inset  
(optional)



### Model Meaning



### Advantages & Features

- Thicker electrophoretic rust-proof layer on overflow parts for greater durability
- Full copper motor with F-grade insulation for longer life
- Advanced triple technology structure design to reduce noise
- Vortex type fast self-priming for energy saving
- Brass impeller to prevent rust

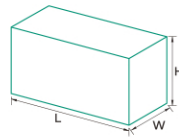
### Applications

- This series of product is used for domestic water supply, equipment matching, pipeline pressurization, garden irrigation, vegetable greenhouse watering, water supply for enterprises and high-rise buildings.

### Working Conditions

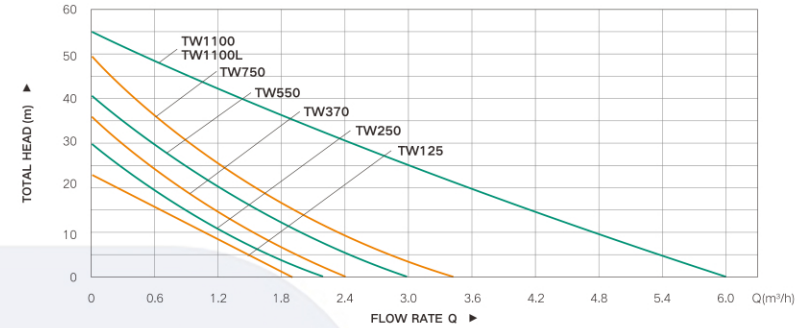
- Transport clean water and other viscous, non-corrosive liquid, and shall not transport flammable, explosive, easily gasified, and solid-containing liquids
- Granular or fibrous liquid with a PH between 6.5-8.5
- Ambient temperature should not exceed 40°C
- The medium temperature of ordinary self-priming pump is +4°C~+60°C
- The volume ratio of solid impurities in the medium is not more than 0.1%, and the particle size is not more than 0.2mm

### Package Dimensions



Model	L	W	H
	cm	cm	cm
TW125	27.9	23.9	31
TW250	27.9	23.9	31
TW370	27.9	23.9	31
TW550	29.5	24.3	34.3
TW750	29.5	24.3	34.3
TW1100	35	25	36
TW1100L	53	33.5	67

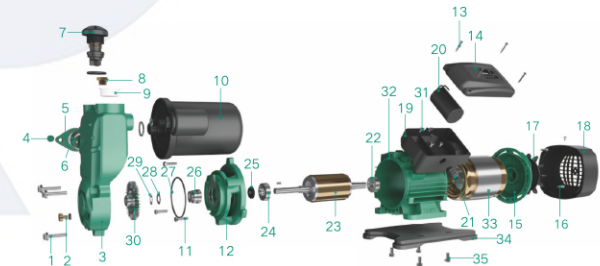
### Performance Curve



### Performance Parameters

Model	Max.flow	Max.head	Power	Voltage	Max.suct	Inlet/Outlet	Rotating speed
	m³/h	m	kW	V	m	In	rpm
TW125	2	24	0.125	220	8	1"x1"	2850
TW250	2.2	30	0.25	220	8	1"x1"	2850
TW370	2.4	36	0.37	220	8	1"x1"	2850
TW550	3	42	0.55	220	8	1"x1"	2850
TW750	3.4	50	0.75	220	8	1"x1"	2850
TW1100	6	55	1.1	220	8	1.5"x1.5"	2850
TW1100L	6	55	1.1	220	8	1.5"x1.5"	2850

### Product Structure



NO.	Part	NO.	Part	NO.	Part	NO.	Part	NO.	Part
1	Screw	8	Air bolt	15	Motor end cover	22	Upper bearing	29	Locking ring
2	Air screw	9	Dust cover	16	Screw	23	Rotor	30	Impeller
3	Pump body	10	Pressure tank	17	Fan	24	Bearing	31	Bolt
4	Hexagon flange screw	11	Screw	18	Fan cover	25	Water washer	32	Motor body
5	Inlet flange	12	Motor front cover	19	Terminal box	26	Mechanical seal	33	Stator
6	Rubber valve	13	Screw	20	Capacitor	27	O-Ring	34	Bottom plate
7	Check valve assembly	14	Terminal box cover	21	Cable Jacket	28	Flat washer	35	Hexagon head bolt